

# IDENTITY MANAGEMENT PLATFORM

Biometrics Security Manager

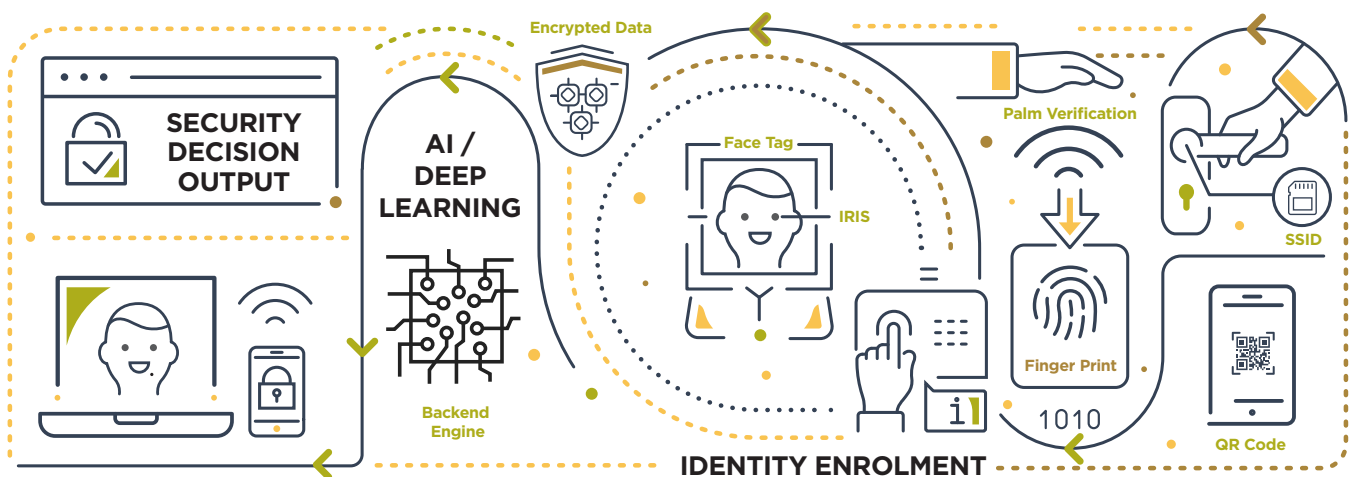


# MULTIMODAL IDENTIFICATION

**Identity Management Platform (IDMP) is designed to empower human identification on-the-go with enhanced security governance, while utilising innovative digital identification capabilities to bridge the tripartite connections between people, activities, and environment.**

Supported by multimodal authentication and biometrics, IDMP effectively captures the individual's credentials and activities across the entire identity lifecycle. These interactions are secure yet efficient, thanks to its multi-layered rings of defence that have been hardened through integrated security appliances.

In addition, IDMP's open architecture design is granular, robust, and extensible for cross-network integration and configuration. This enables encyclopaedic realms of security management for identity analytics within a single, unified database — providing better insights to facilitate strategic security planning.



## IDMP IN ACTION: HOW IT WORKS

IDMP digitally captures an individual's infographic through multi-factor registration and identification via biometrics such as facial, iris, palm veins, and fingerprint recognition. Sources include self-enrolment kiosks, or other unique identifiers like passports, SSID cards, mobile tokens or vehicle license plates (ANPR). The collected data is encrypted, analysed, and processed for security verification using human and AI input.

IDMP's AI capabilities continually trains and enhances the user's digital identity, strengthening its security fencing over time for exceptional data accuracy and recognition efficiency. Its built-in algorithms takes security to new intelligent heights by powering the authentication schema before giving access rights tagged to identified individuals.

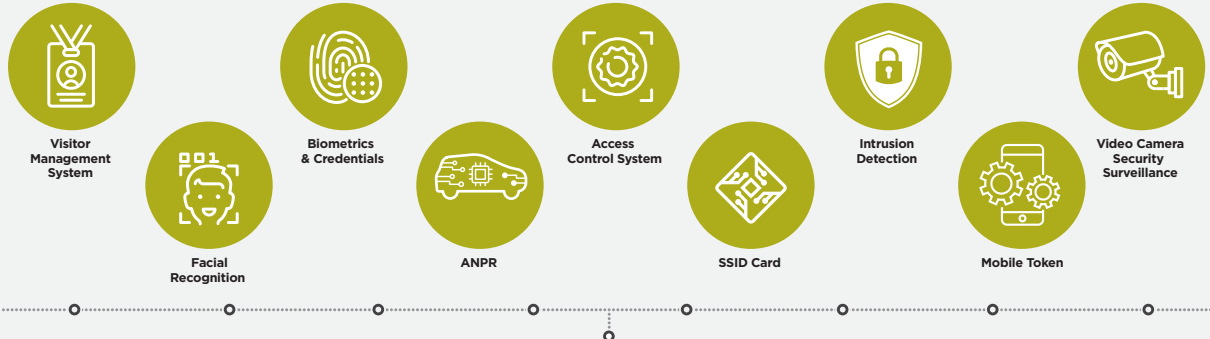
## INTELLIGENCE OF IDMP

- I. Highly Targeted Control: Centralised security intelligence, operations, and schema
- II. Uniquely You Profiling: Built-in AI that studies, learns, and customises security profiles for different environments
- III. Sustainable Security Structure: Extensible and robust infrastructure that easily integrates with other security modules

# LIFECYCLE OF IDMP

Manage the security identification and authorisation appliances seamlessly with IDMP.

## IDENTITY APPARATUS



TARGET'S CREDENTIALS AND ACTIVITIES ARE CAPTURED

IDMP DIGITALLY ADMINISTERS THE SECURITY SCHEMA

ANALYSE • VALIDATE • MATCH

AI • SECURITY LOGIC & REGULATIONS

UNIFIED SECURITY • IDENTITY MANAGEMENT

### SURVEILLANCE @ NATIONAL / COMMUNITY LEVEL



HOSPITALITY



ENTERTAINMENT



LAW ENFORCEMENT



BANKS



MUSEUMS



STATIONS

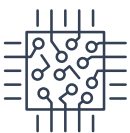


HIGH SECURITY AREAS



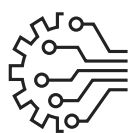
AIRPORTS

## FOUR STRATEGIC REASONS TO SELECT IDMP



### Future-proofed Security with Cognitive A.I Engine

- Multimodal biometrics and liveness identification technology to quickly detect malicious threats
- Intelligent security fencing and governance backed by AI engine and Deep Learning
- Closed-loop communications with built-in data protection mechanisms



### Experience Unparalleled Ease of Security Optimisation

- Supports wide variety of commercial off-the-shelf devices, equipment, and systems
- Centralises maintenance and security governance efforts while streamlining data points in a single source of truth
- Reduces long-term operational and financial costs



### Create Safer Communities with Encyclopaedic Crowd Management

- Get 360° identity surveillance of humans and vehicles anytime, anywhere
- Create new crowd analysis and security opportunities through intelligent identification capabilities
- Achieve timely detection and identification of volatile situations for faster response



### Enjoy Assurance backed by World-Renowned Security Experts

- Successful implementations of turnkey projects and bespoke solutions in over 100 cities worldwide
- Dedicated and continuous innovation investments in Smart Security initiatives
- Veteran team of innovation experts for delivering sustainable and intelligent security solutions

**ST Engineering Electronics Ltd.**

[www.stengg.com](http://www.stengg.com)

[URS-Marketing@stengg.com](mailto:URS-Marketing@stengg.com)

© 2021 ST Engineering Electronics Ltd. All rights reserved.

SSA-IDMP-1