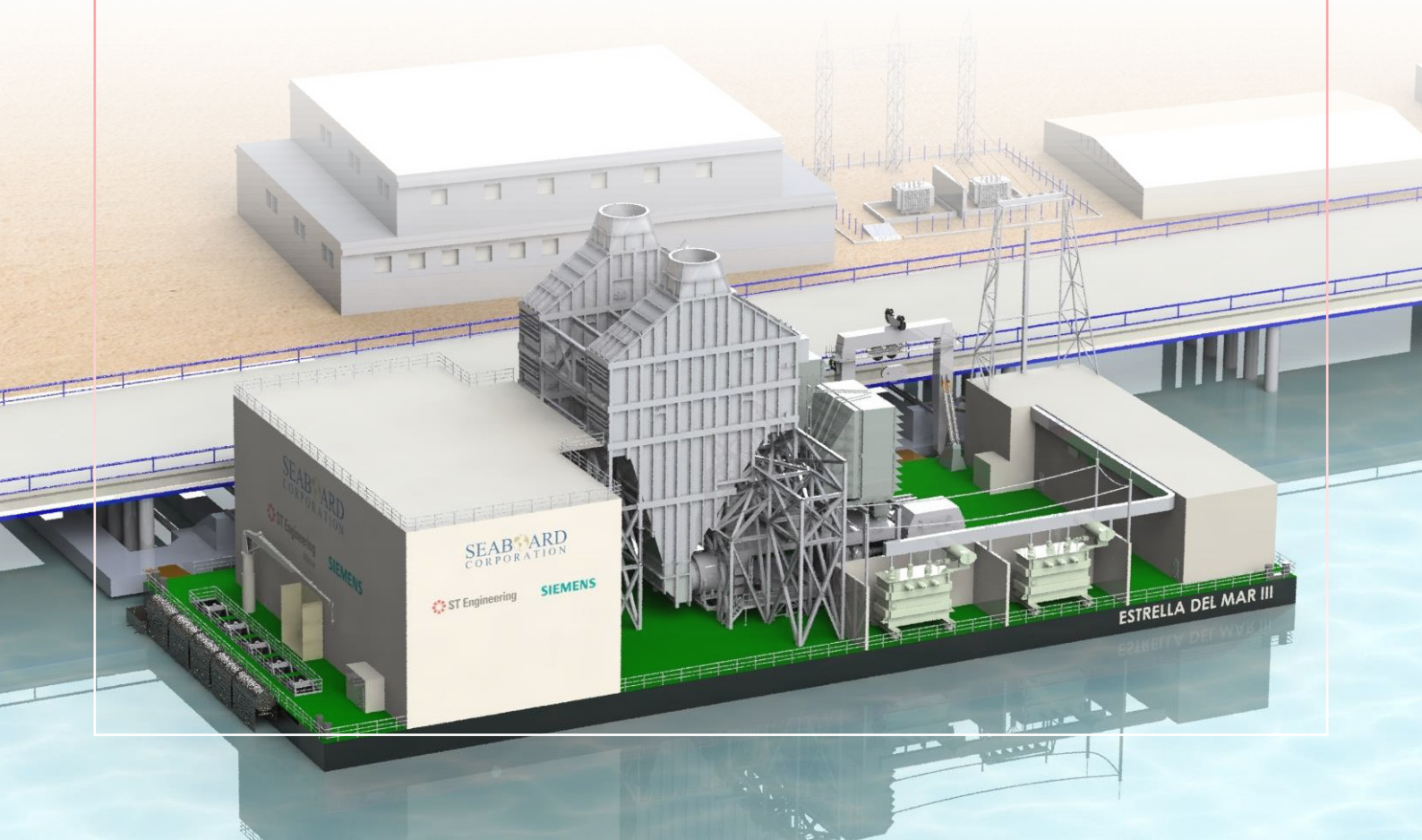
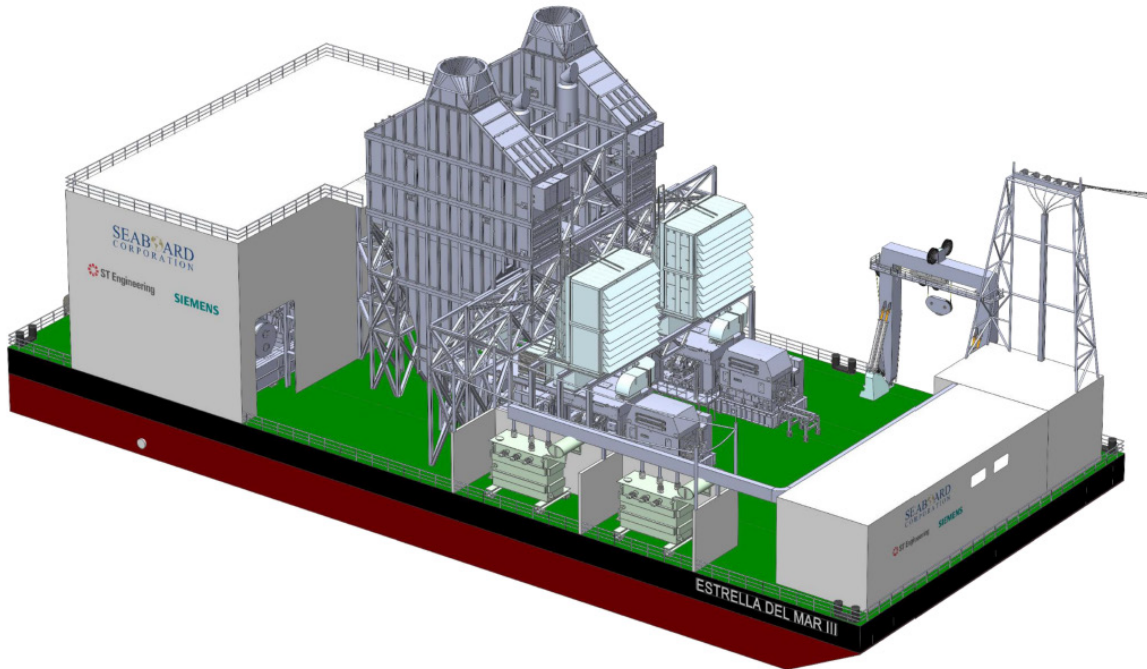


SEA-FLOAT POWER PLANT ESTRELLA DEL MAR III



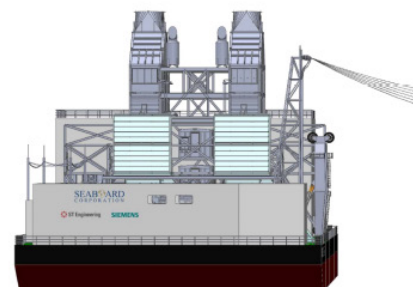
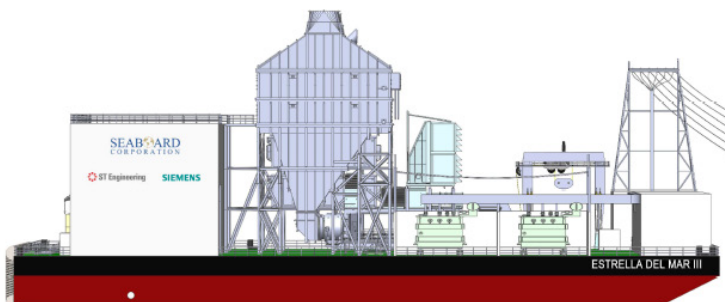
SEA-FLOAT POWER PLANT ESTRELLA DEL MAR III



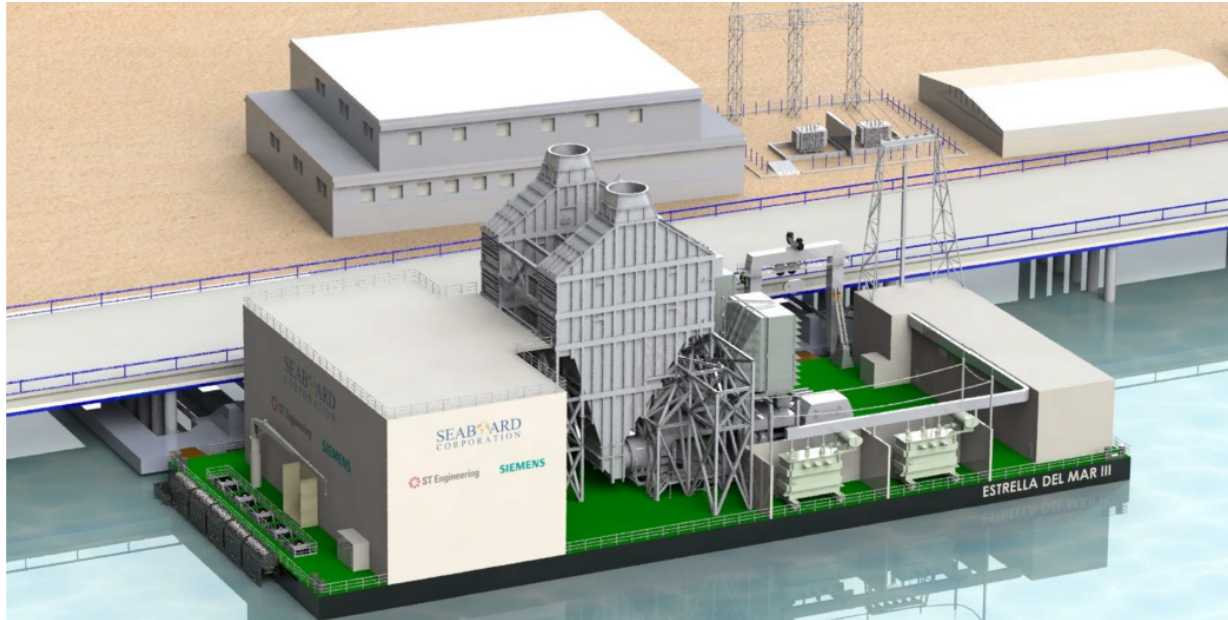
Estrella Del Mar III is a floating power plant capable of delivering a nominal net power output of approx. 145.5MW at design condition to the shore power system via two export feeders at 69kV voltage level.

The power generation will be achieved by the operation of two gas fuel fired gas turbines in combination with one steam turbine (2x1 Combined Cycle Power Plant) installed on the barge deck. The gas turbines are operating with natural gas supplied from shore. Two steam boilers (OTSG- Once Through Steam Generator) are installed to recover the exhaust energy from the gas turbines and generate steam to drive the steam turbine.

The floating power plant will be moored at the working location with mooring dolphin system, continuously supplying electric power to shore.



SEA-FLOAT POWER PLANT ESTRELLA DEL MAR III



PRINCIPAL SPECIFICATIONS

LENGTH	80M
BREADTH	35M
DRAFT	3.5M

TANK CAPACITY

FUEL OIL	APPROX. 8M³
FRESH WATER	APPROX. 1,330M³
BLACKWATER	APPROX. 170M³

CLASS

BV CLASS	~ HULL 10 IN (2.0) SPECIAL SERVICE/ FLOATING POWER PLANT INWATER SURVEY
-----------------	--

PERFORMANCE

POWER OUTPUT (NET)	145.5MW
---------------------------	----------------

BESS (BATTERY ENERGY STORAGE SYSTEM)

CAPACITY	5MW FOR 2H (10MWH)
-----------------	---------------------------

GAS TURBINE FUEL

NATURAL GAS FROM SHORE

GENERAL INFORMATION

DECK CRANE	1 X OVERHEAD A-FRAME CRANE WITH CAPACITY OF 50T 1 X OVERHEAD TRAVELLING CRANE WITH CAPACITY 50T 1 X PEDESTAL CRANE WITH CAPACITY OF 4T
-------------------	---

BALANCE OF PLANT (BOP) MACHINERY	1 X 1,350EKW ESSENTIAL GENERATOR 3 X MAIN COOLING WATER PUMPS OF TOTAL 8,500M³/H 1 X CONDENSER FILLING PUMP OF 30M³/H 2 X AUXILIARY COOLING WATER PUMPS OF 330M³/H 2 X AUXILIARY COOLING FRESH WATER PUMPS OF 400M³/H 2 X AC COOLING PUMPS OF 140M³/H 2 X CONDENSATE PUMPS OF 180M³/H 3 X EVAPORATORS OF 60T/UNIT 3 X DEMINERALIZED WATER TRANSFER PUMPS OF 20M³/H
---	--

OTHER SHIP EQUIPMENT	CLOSED CIRCUIT TELEVISION SYSTEM - CCTV INTERNAL TELEPHONE/ PA SYSTEM
-----------------------------	--

MOORING CONNECTIONS TO QUAY	2 X MOORING DOLPHINS
------------------------------------	-----------------------------

POWER PLANT MACHINERY

MAIN GENERATOR	2 X SGTB00 GAS TURBINES (56MW EACH) 1 X SST600 STEAM TURBINE (47MW)
STEAM GENERATOR	2 X OTSG